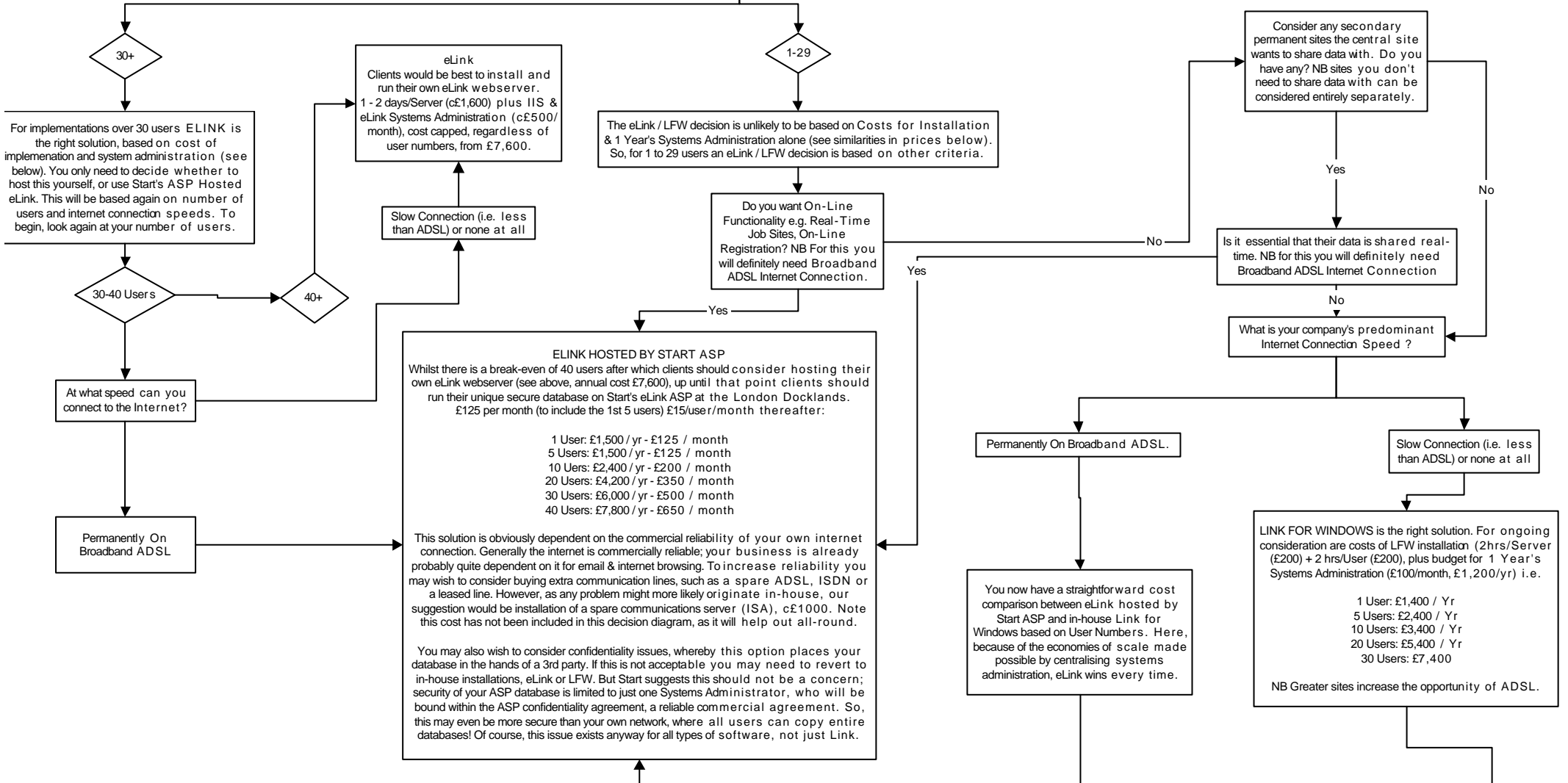


START

Use this Decision Diagram to consider the appropriateness of eLink or Link for Windows (LFW). Your decision is most dependent on cost of accomodating growing numbers of users, followed by internet connection speeds and any need for on-line functionality. To begin with, how many users do you have? When calculating this, if you have multiple sites and your predominant internet connection speed is permanently on ADSL, you should add all users in all sites together, as your ADSL infrastructure allows this. If not, you should base your initial considerations on the central permanent site, most probably that with the highest number of users. Secondary sites can be accomodated by either solution. It is necessary to arrive at a common platform for all sites so if this accomodation is not acceptable to a particular site, re-evaluate starting with the difficult site; but, this is unlikely as normally all permanent sites will have similar selection criteria. Similarly off-site working can be accomodated by either solution, though here it is suggested that off-site workers just fit in with permanent sites. Please note implementation and administration costs referred to are budget guides and not quotes; actual costs will depend on individual sites. So, to begin, how many users do you have?



Link For Windows Remote Workers and / or Secondary Sites - Run LFW child databases. With Slow Connection Speed (e.g. less than ISDN / ADSL): off-site Synchronisation available for desk-tops and laptops over the communications line using Link Anywhere (rsynchronise laptop on return to base). With Permanently on Broadband ADSL: just as for slower lines (but faster). With No Internet Connection: daily sending of up-to-date databases on CDs from child sites to the parent site would be possible; if this is not considered practical this may only be a viable solution for laptops that can synchronise on return to base. So, LFW is a great solution for off-site work, the important criteria being getting the remote data back to the parent, either by bringing the laptop in, or using Link Anywhere to send the data down the phone line.

eLink Remote Workers and / or Secondary Sites With Permanently on Broadband ADSL: Real-time connection to central database over the web; good permanent commercial solution, just like having a permanent site. With Slow Connection Speed (e.g. 56K dial-up from home or a laptop dialling the internet via a GPRS mobile phone whilst travelling): for simple look-up of data (e.g. phone numbers) real-time connection to the live database over the web; but at these slower speeds for actual work implement as for "no internet connection". With "no Internet Connection": run eLink child databases. However, note as eLink requires a web-server this needs to be installed and administered on the remote machine, so this work should be considered. Note compatibility between eLink and Link databases is as yet under development so it is not currently a feasible option; if it were to be available, the remote machine could run the simpler LFW, connecting to a LFW child of an eLink parent. So, eLink is a great solution for off-site work, either over the internet (preferably ADSL) or using eLink childs.

To look up data out of the office consider Start hosting read-only eLink version of your previous month's LFW database. £125 / month + £5/user over 6. Each more frequent update £60.